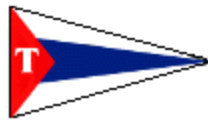


TIBURON YACHT CLUB

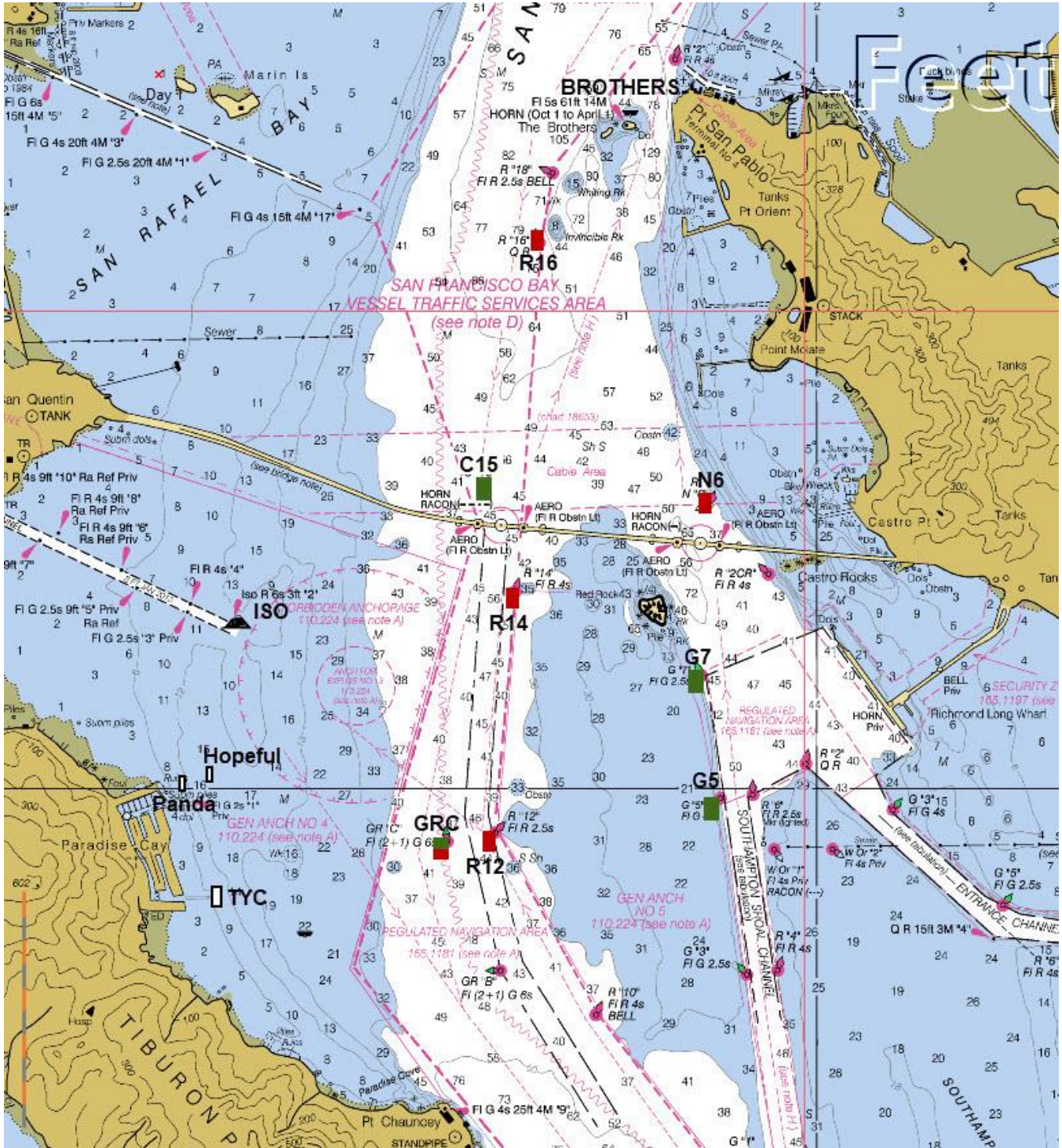
Race Courses

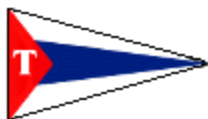
Course #	Marks	Distance
1	Start – TYC – Hopeful – TYC – Finish	2.4 nm
2	Start – TYC – ISO - Finish	2.5 nm
3*	Start – TYC – GRC – TYC (S) – Finish	3.0 nm
4	Start – TYC – GRC – ISO – Finish	3.4 nm
5	Start – TYC – R12 – R14 - Finish	4.3 nm
6	Start – TYC – C15 – ISO – Finish	4.4 nm
7	Start – TYC – R12 – R14 – ISO – Finish	4.6 nm
8*	Start – TYC – R14 – TYC (S) – Finish	4.7 nm
9*	Start – TYC – C15 – TYC (S) – Finish	5.2 nm
10*	Start – TYC – G5 – TYC (S) – Finish	5.3 nm
11	Start – TYC – Red Rock – ISO – Finish	5.4 nm
12	Start – TYC – GRC – N6 – ISO – Finish	6.1 nm
13*	Start – TYC – G7 – ISO – GRC (S) – TYC (S) – Finish	7.5 nm
14	Start – TYC – R16 (S) – N6 (S) – ISO – Finish	7.7 nm
15	Start – TYC – Brothers – ISO – Finish	7.7 nm
16**	Start – ISO (S) – Hopeful – ISO – Finish	2.7 nm
17**	Start – ISO (S) – C15 (S) – Finish	3.5 nm
18**	Start – ISO (S) – GRC (S) – ISO – Finish	3.9 nm
19**	Start – ISO (S) – R12 – ISO – Finish	4.2 nm
20	Start – ISO (S) – C15 (S) – GRC (S) – TYC (S) – Finish	4.8 nm
21*	Start – GRC – Finish	2.2 nm
22*	Start – GRC (S) – TYC (S) – Finish	2.6 nm
23*	Start – GRC – ISO – Finish	3.1 nm
24*	Start – GRC – C15 – Finish	4.3 nm
25*	Start – GRC – ISO (S) – R14 (S) – Finish	5.1 nm
T	Custom course to be announced over the radio by the Race Committee	
*	These courses may be sailed twice around by sailing through the finish line at the end of the first lap and then passing around Hopeful (to Starboard) and continuing to the next mark.	
**	These courses may be sailed twice around by sailing through the finish line at the end of the first lap and then passing around Hopeful (to Port) and continuing to the next mark.	



TIBURON YACHT CLUB

TYC Course Marks





TIBURON YACHT CLUB

TYC Course Mark GPS Positions

Positions for the San Francisco Bay Navigation Marks have been taken from USA-NOAA/NOS chart 18649_1 and may not be completely accurate.

<u>Mark</u>	<u>Chart Details</u>	<u>Lat</u>	<u>Long</u>
Sisters		37° 59.300' N	122° 26.519' W
Brothers		37° 57.793' N	122° 26.020' W
C15	<i>G C "15"</i>	37° 56.246' N	122° 26.786' W
G5	<i>G "5" Fl G 2.5s</i>	37° 54.980' N	122° 25.513' W
G7	<i>G "7" Fl G 2.5s</i>	37° 55.493' N	122° 25.617' W
GRC	<i>GRG "C" Fl (2+1) G 6s</i>	37° 54.788' N	122° 26.966' W
ISO	<i>Iso R 6s 3ft "2"</i>	37° 55.705' N	122° 28.115' W
N6	<i>R N "6"</i>	37° 56.197' N	122° 25.568' W
R12	<i>R "12" Fl R 2.5s</i>	37° 54.827' N	122° 26.717' W
R14	<i>R "14" Fl R 4s</i>	37° 55.842' N	122° 26.607' W
R16	<i>R "16" O R</i>	37° 57.299' N	122° 26.482' W
TYC	-	37° 54.543' N	122° 28.150' W
Hopeful	-	37° 55.054' N	122° 28.302' W
Panda	-	37° 55.024' N	122° 28.446' W
Marina Entrance	<i>Fl G 2s "1" Priv</i>	37° 54.953' N	122° 28.346' W
CG Mooring		37° 54.406' N	122° 27.721' W
GRB	<i>GRG "B" Fl (2+1) G 6s</i>	37° 54.248' N	122° 26.683' W

TYC Marks:

Hopeful (white plastic can marked "Hopeful") is the Outer Distance mark of the TYC Start Line off Paradise Cay **north** entrance

Panda (white plastic can marked "Panda") is the Inner Distance mark of the TYC Start Line off Paradise Cay **north** entrance

TYC (white plastic can marked "SC") is located off Paradise Cay **south** entrance

This document should not be used for navigational purposes.