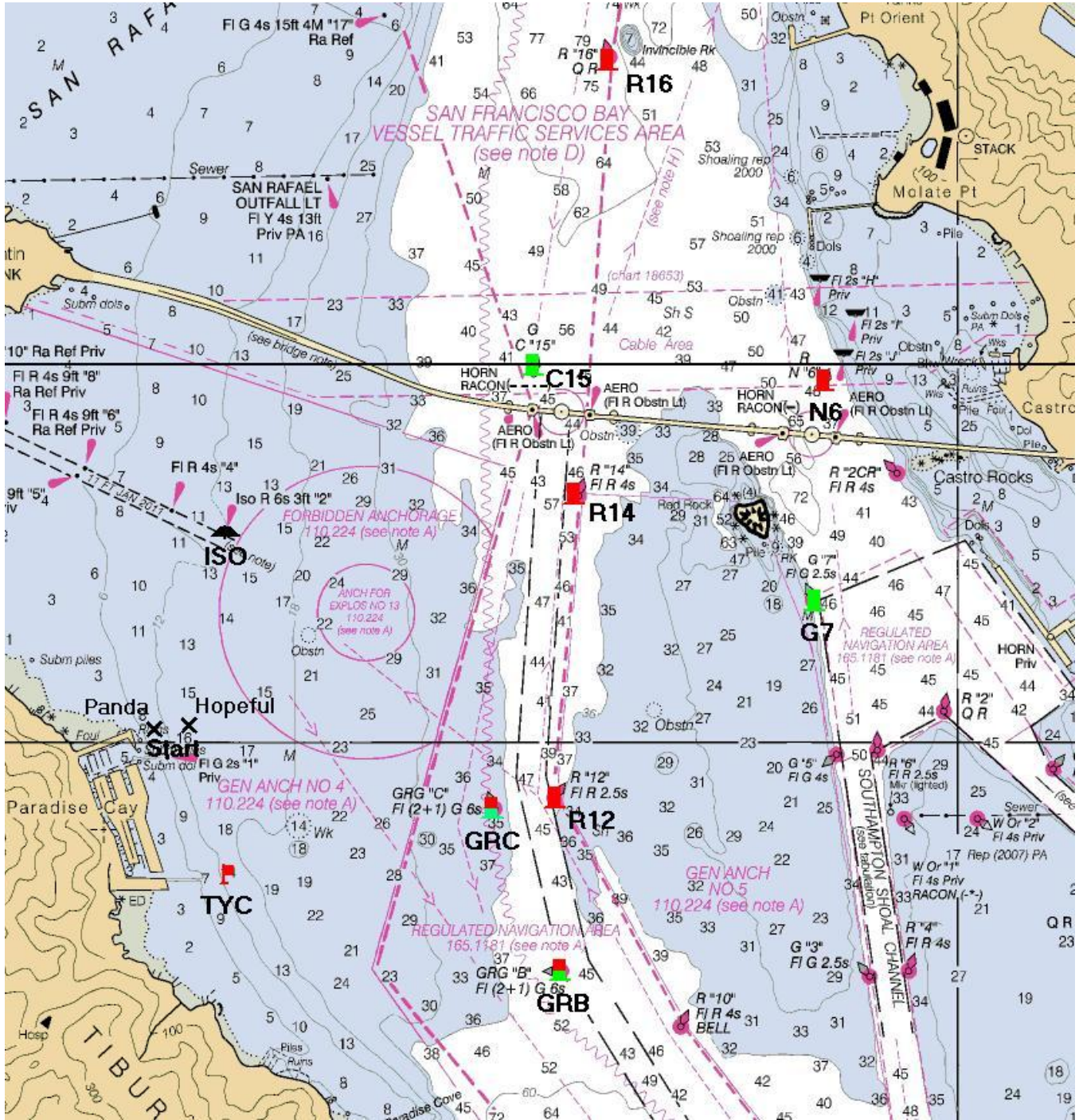
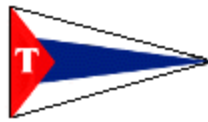


TIBURON YACHT CLUB

# TYC Race Marks – GPS Positions





TIBURON YACHT CLUB

This document is written as an aid to racers participating in TYC Club Races.

Positions for the San Francisco Bay Navigation Marks have been taken from USA-NOAA/NOS chart 18649\_1 and may not be completely accurate.

<u>Mark</u>	<u>Chart Details</u>	<u>Lat</u>	<u>Long</u>
<b>C15</b>	<i>G C "15"</i>	37° 56.238' N	122° 26.796' W
<b>G7</b>	<i>G "7" Fl G 2.5s</i>	37° 55.478' N	122° 25.608' W
<b>Hopeful</b>	-	37° 55.058' N	122° 28.277' W
<b>ISO</b>	<i>Iso R 6s 3ft "2"</i>	37° 55.698' N	122° 28.100' W
<b>N6</b>	<i>R N "6"</i>	37° 56.189' N	122° 25.558' W
<b>Panda</b>	-	37° 55.037' N	122° 28.379' W
<b>R12</b>	<i>R "12" Fl R 2.5s</i>	37° 54.813' N	122° 26.708' W
<b>R14</b>	<i>R "14" Fl R 4s</i>	37° 55.825' N	122° 26.603' W
<b>R16</b>	<i>R "16" O R</i>	37° 57.291' N	122° 26.473' W
<b>GRB</b>	<i>GRG "B" Fl (2+1) G 6s</i>	37° 54.233' N	122° 26.677' W
<b>GRC</b>	<i>GRG "C" Fl (2+1) G 6s</i>	37° 54.775' N	122° 26.961' W
<b>TYC</b>	-	37° 54.499' N	122° 28.032' W
<b>Brothers</b>		37° 57.790' N	122° 26.008' W
<b>Sisters</b>		37° 59.294' N	122° 26.501' W
<b>Marina Entrance</b>	<i>Fl G 2s "1" Priv</i>	37° 54.950' N	122° 28.349' W

**TYC Marks:**

**Hopeful** (white plastic can marked "Hopeful") is the Outer Distance mark of the TYC Start Line off Paradise Cay **north** entrance

**Panda** (white plastic can marked "Panda") is the Inner Distance mark of the TYC Start Line off Paradise Cay **north** entrance

**TYC** (red plastic can marked "SC") is located off Paradise Cay **south** entrance

**This document should not be used for navigational purposes.**